

TEST PIT TO DETERMINE DIRECTION, DIAMETER, INVERT AND MATERIAL OF EXISTING STORM DRAIN

CONNECT NEW OUTLET CONTROL STRUCTURE TO EXISTING STORM DRAIN PIPE

REMOVE EXISTING STORM DRAIN

CONSTRUCT 8" DIAMETER STORM DRAIN INLET TO NEW OUTLET CONTROL STRUCTURE

REMOVE AND DISPOSE OF CHAIN LINK FENCE

REMOVE AND DISPOSE OF EXISTING STONE BASIN AND INLET PIPE/VALVE SEE NOTE 1

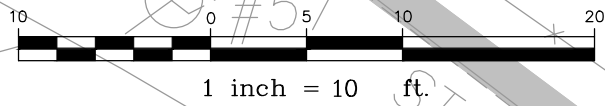
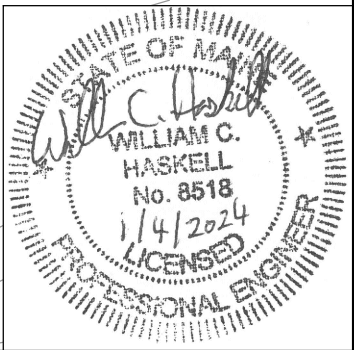
INSTALL NEW 4' DIAMETER OUTLET CONTROL STRUCTURE

REMOVE EXISTING STORM DRAIN

REMOVE AND RECONSTRUCT EXISTING STONE WALL

PROTECT EXISTING 4" PVC AND WIRES

- NOTE:**
- BACKFILL HOLE WITH COMMON BORROW & LOAM & SEED
 - LOAM, SEED, AND MULCH ALL AREAS DISTURBED BY CONSTRUCTION



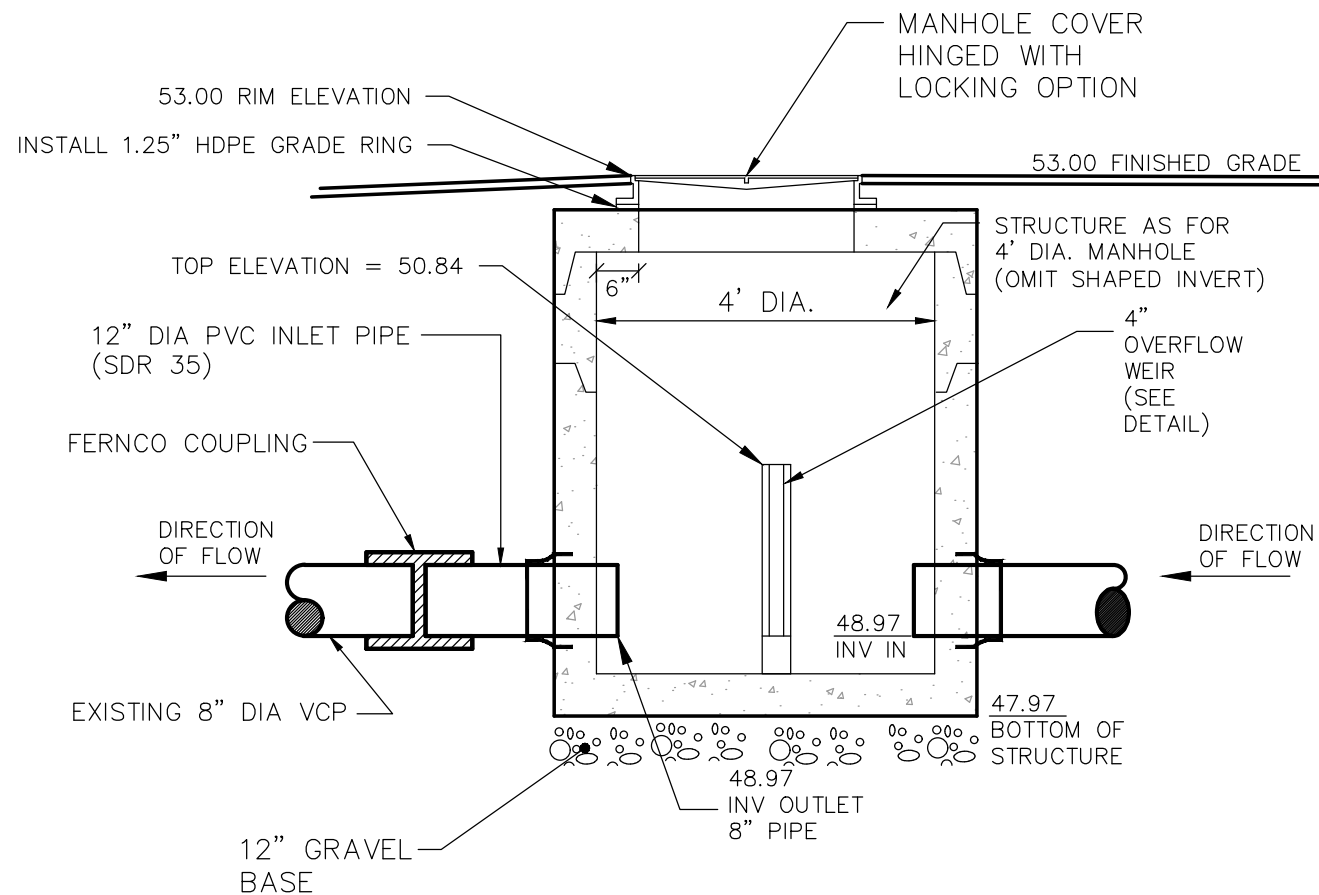
Rev.	Date	Revision

Design: XXX	Date: DEC 2023
Draft: GJH	Job No.: 3693.04
Checked: WCH	Scale: 1"=10'
File Name: 3693.04-PBASE.dwg	

Relationships. Responsiveness. Results.
www.gorrillpalmer.com
207.772.2515

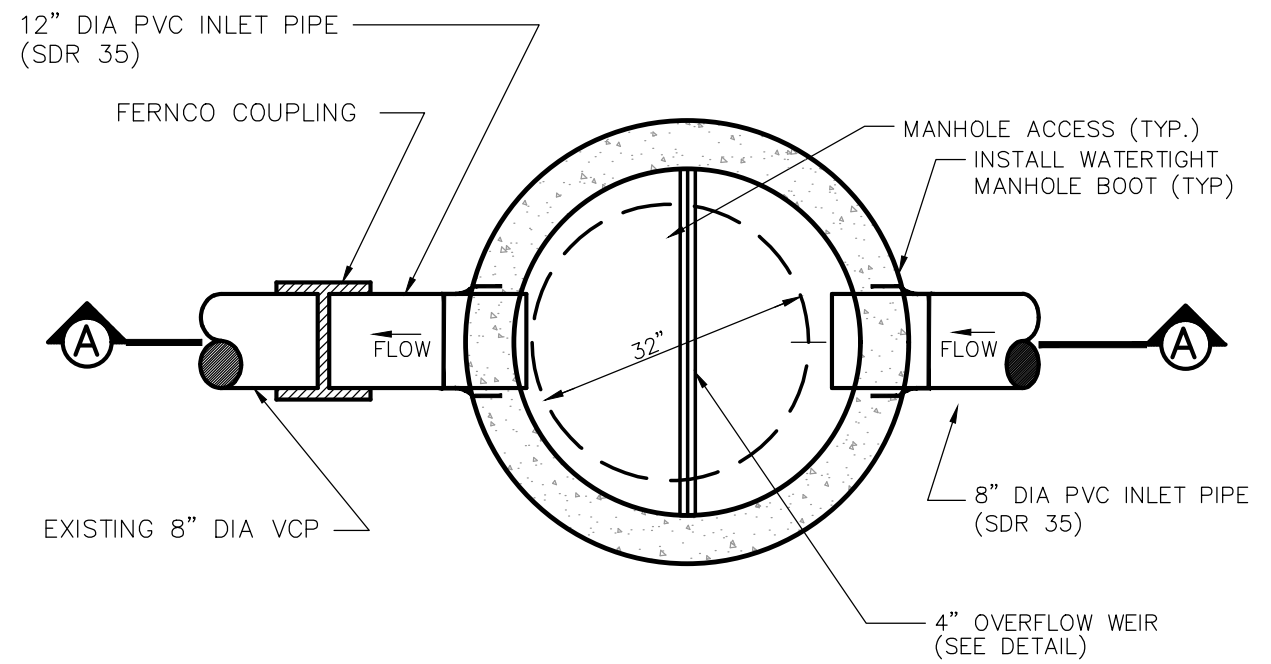
Drawing Name:	FWP Pond Bidding
Project:	Fort Williams Park Pond

Figure No.
P1



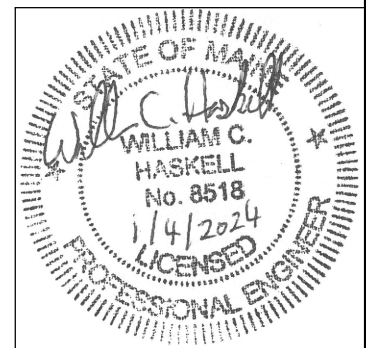
SECTION A-A
OUTLET CONTROL STRUCTURE

N.T.S.



PLAN VIEW
OUTLET CONTROL STRUCTURE

N.T.S.



Rev.	Date	Revision
-	-	-

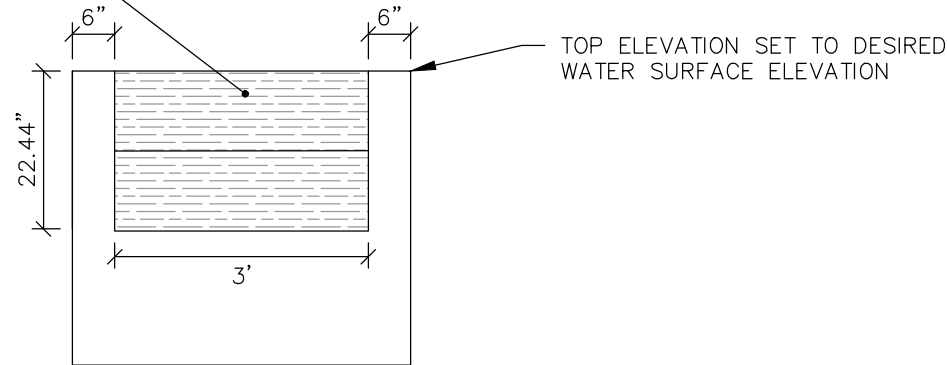
Design:	ARN	Date:	DEC 2023
Draft:	GJH	Job No.:	3693.04
Checked:	WCH	Scale:	NTS
File Name:		3693.04-PBASE.dwg	

Relationships. Responsiveness. Results.
www.gorrillpalmer.com
 207.772.2515

Drawing Name:	Pond Outlet Control Structure
Project:	Fort Williams Park Pond

Figure No.
P2

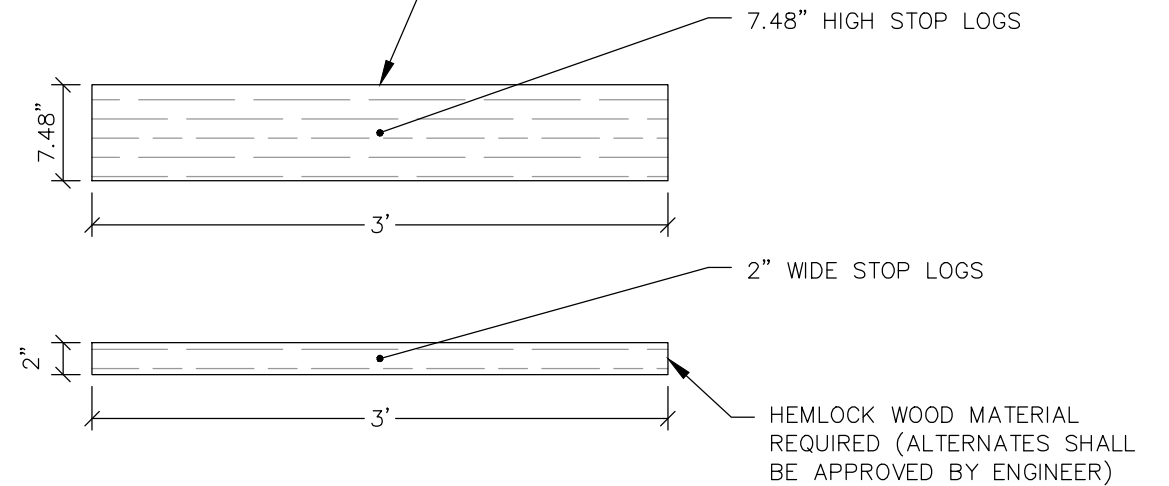
2-7.48" HIGH STOP LOGS
TO ALLOW FOR
ADJUSTMENT OF POND
WATER ELEVATION



CONCRETE WEIR DETAIL

N.T.S.

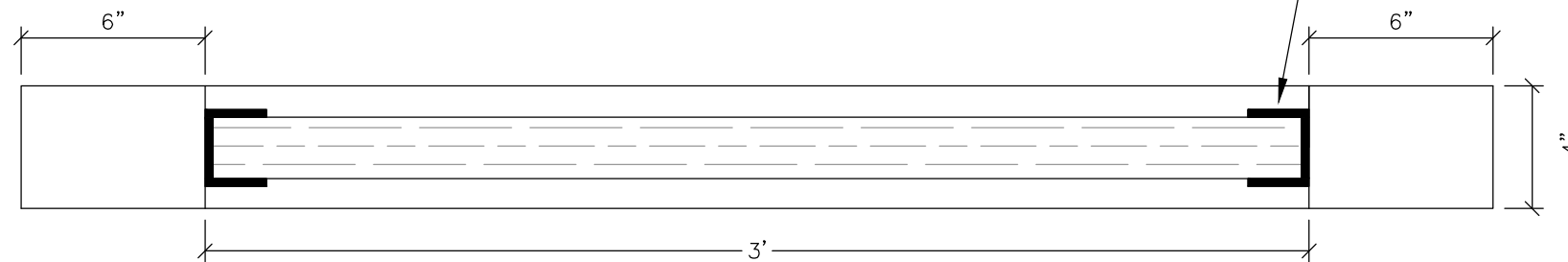
ROUTE EDGES OF STOP LOGS TO
CREATE A TONGUE AND GROOVE
CONNECTION BETWEEN PIECES



STOP LOG DIMENSIONS

N.T.S.

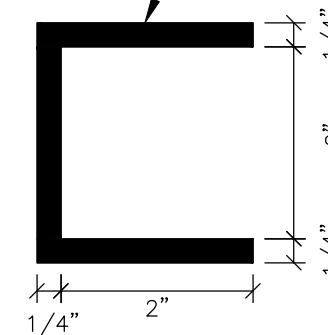
ATTACH STAINLESS STEEL
CHANNELS TO CONCRETE WEIR
WITH STAINLESS HARDWARE



PLAN VIEW
CONCRETE WEIR DETAIL

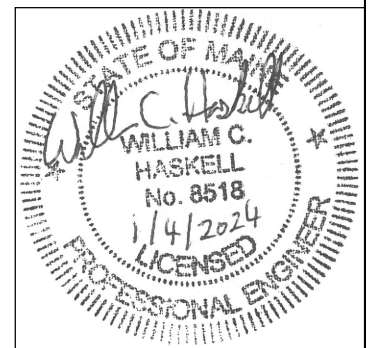
N.T.S.

STAINLESS STEEL



PLAN VIEW
CHANNEL BOLTED TO
CONCRETE WEIR DIMENSIONS

N.T.S.



Rev.	Date	Revision
-	-	-

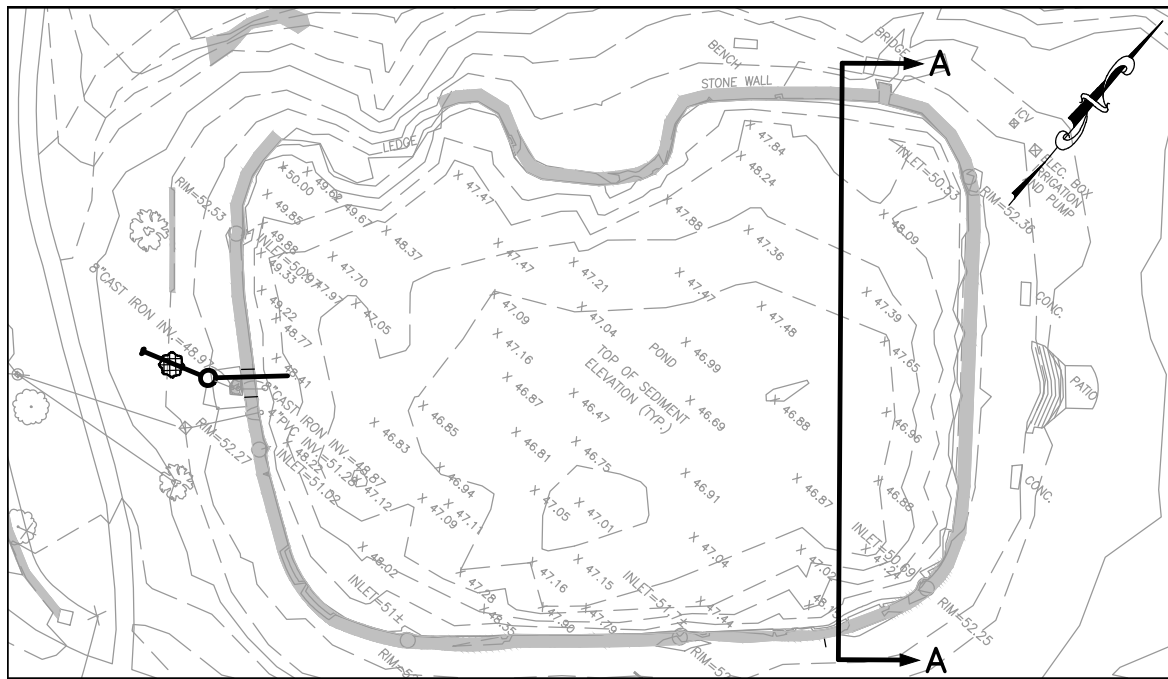
Design: XXX	Date: DEC 2023
Draft: GJH	Job No.: 3693.04
Checked: XXX	Scale: NTS
File Name: 3693.04-PBASE.dwg	

GP GORRILL PALMER

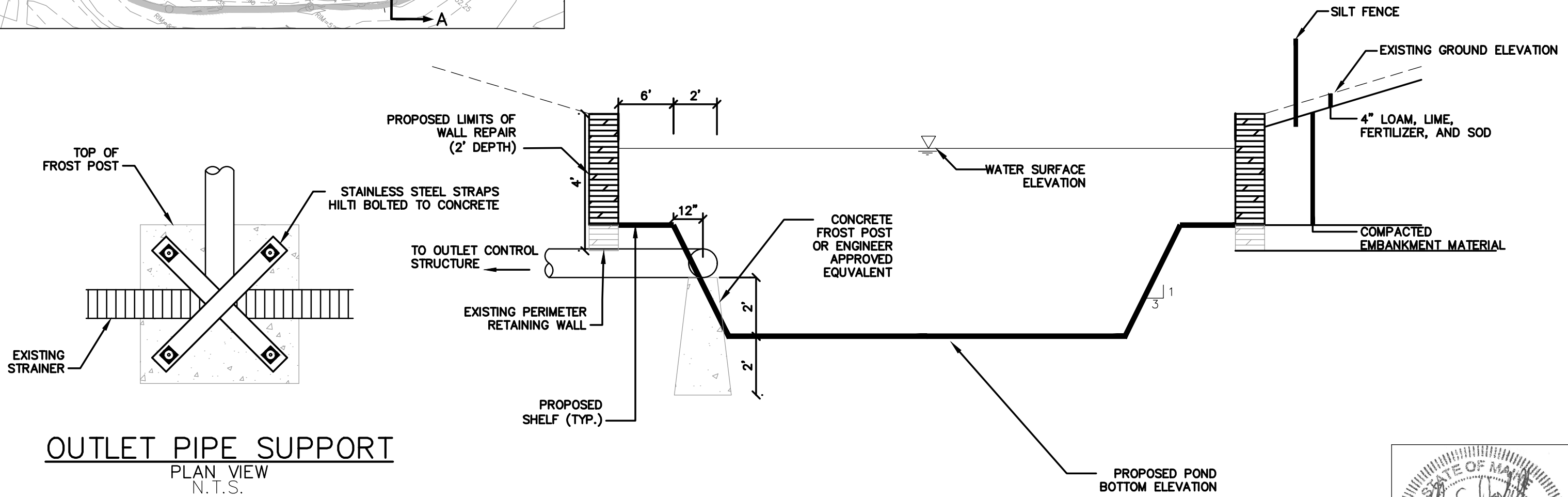
Relationships. Responsiveness. Results.
www.gorrillpalmer.com
207.772.2515

Drawing Name:	Pond Outlet Control Structure
Project:	Fort Williams Park Pond

Figure No.
P3

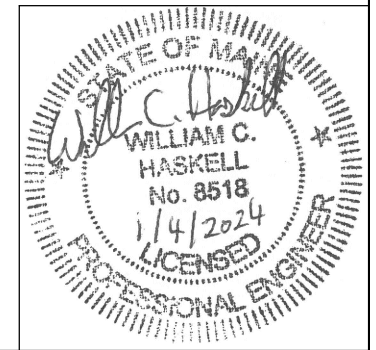


NOTE:
CONTRACTOR SHALL PROVIDE
SHOP DRAWING OF PUMP
SUCTION SUPPORT AS SHOWN
ON PLAN OR ENGINEER
APPROVED EQUIVALENT.



OUTLET PIPE SUPPORT
PLAN VIEW
N.T.S.

OUTLET PIPE SUPPORT SECTION A-A
N.T.S.

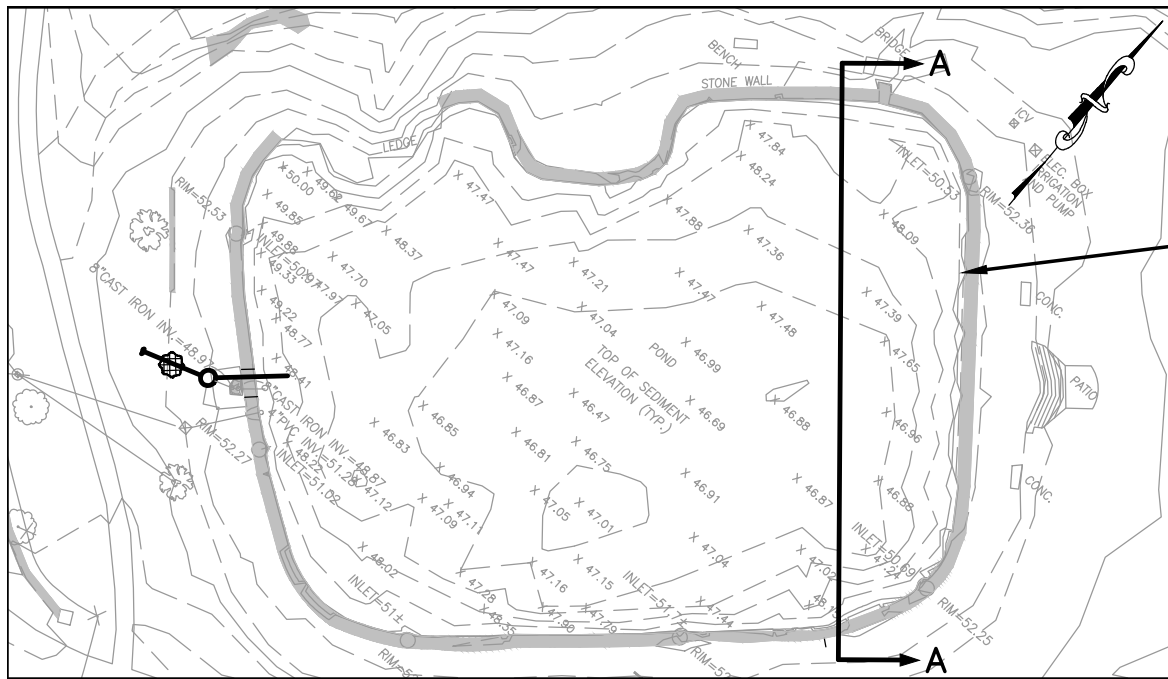


Rev.	Date	Revision

Design: XXX	Date: DEC 2023
Draft: GJH	Job No.: 3693.04
Checked: XXX	Scale: NTS
File Name: 3693.04-PBASE.dwg	

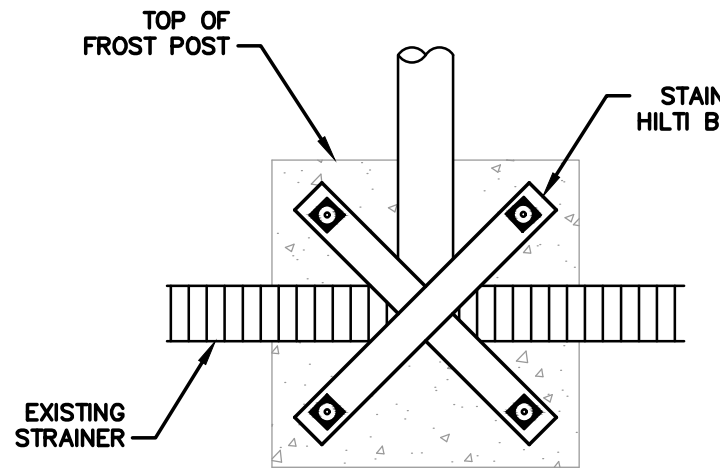
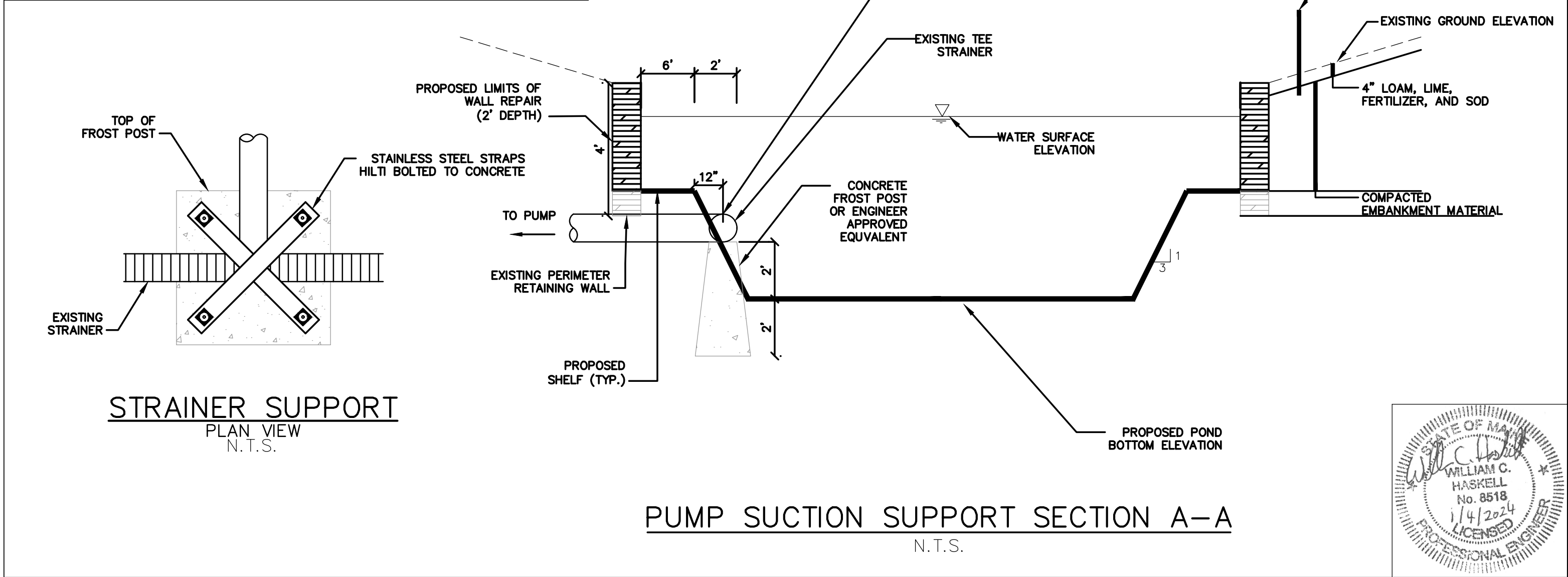
Drawing Name:	Pond Outlet Pipe
Project:	Fort Williams Park Pond

Figure No.
P4



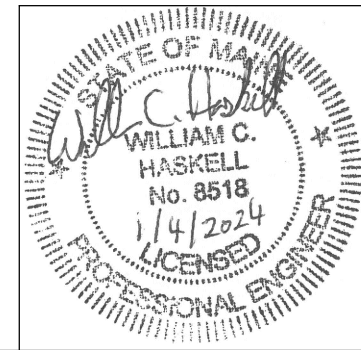
APPROXIMATE LOCATION OF PUMP SUCTION LINE

NOTE:
CONTRACTOR SHALL PROVIDE SHOP DRAWING OF PUMP SUCTION SUPPORT AS SHOWN ON PLAN OR ENGINEER APPROVED EQUIVALENT.



STRAINER SUPPORT
PLAN VIEW
N.T.S.

PUMP SUCTION SUPPORT SECTION A-A
N.T.S.

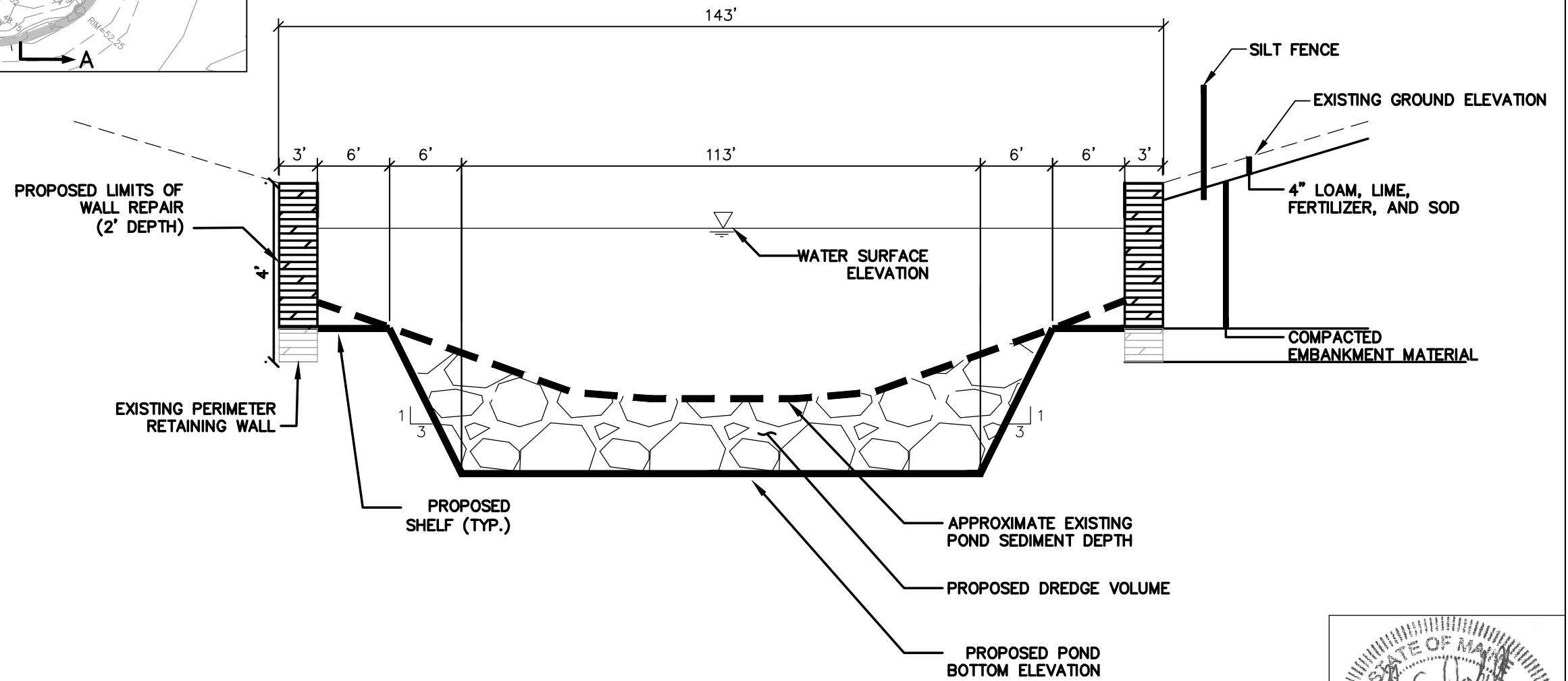
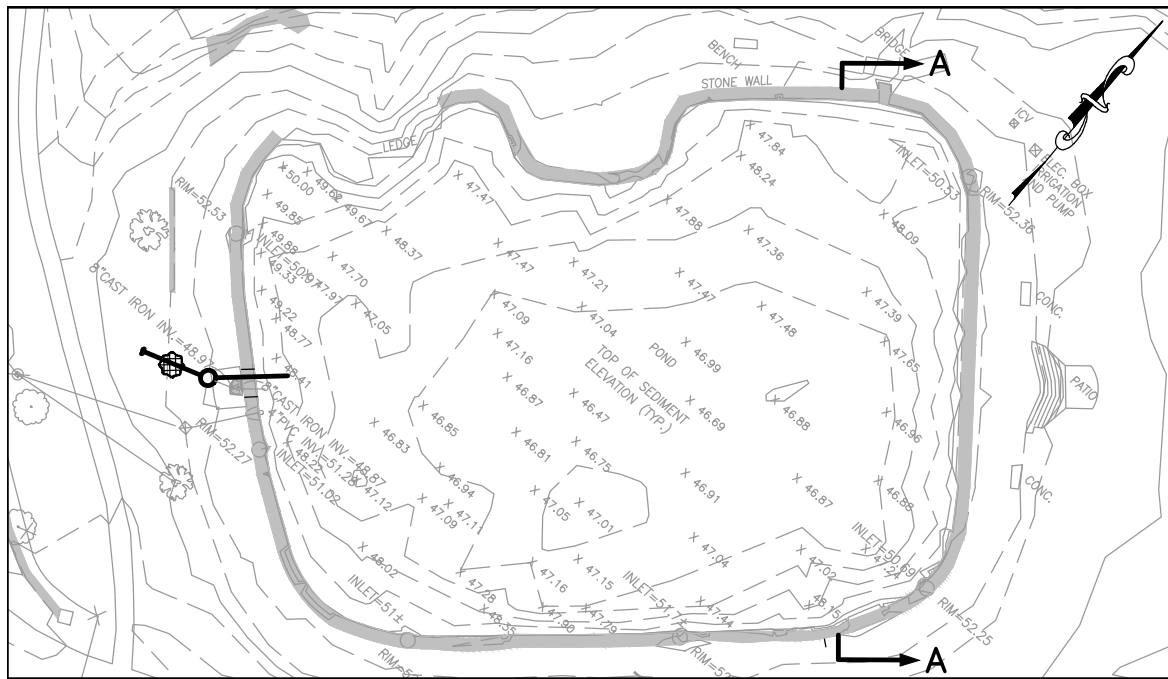


Rev.	Date	Revision

Design: XXX	Date: DEC 2023
Draft: GJH	Job No.: 3693.04
Checked: XXX	Scale: NTS
File Name: 3693.04-PBASE.dwg	

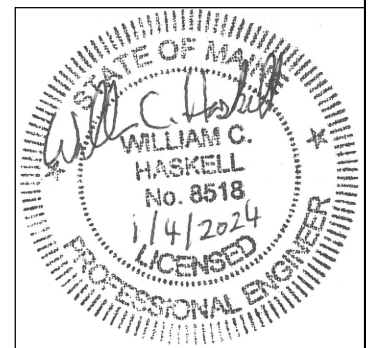
Drawing Name:	Pond Outlet Control Structure
Project:	Fort Williams Park Pond

Figure No.
P5



TYPICAL POND CROSS-SECTION

N.T.S.



Rev.	Date	Revision
-	-	-

Design: XXX	Date: DEC 2023
Draft: GJH	Job No.: 3693.04
Checked: XXX	Scale: NTS
File Name: 3693.04-PBASE.dwg	



Relationships. Responsiveness. Results.
www.gorrillpalmer.com
207.772.2515

Drawing Name:	Pond Outlet Control Structure
Project:	Fort Williams Park Pond

Figure No.
P6